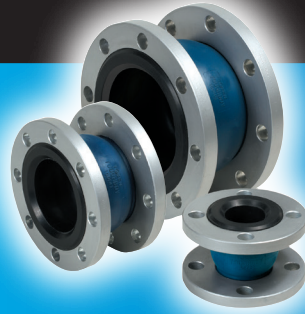


Flexible rubber joint Spherical high durable type

TOUGHBOY

Flexible rubber joint with low counterforce and high durability.



JWWA compliance display
(20A~300A)



Feature

Low counter-force

Load reduction for equipment and piping with excellent vibration control durability.

High durability

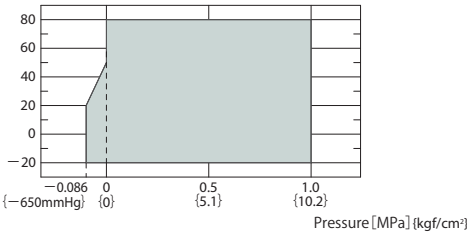
Passed reciprocating pressure test for 400,000 cycles.

Primary side of water supply (JWWA compliance)

Tough Boy, using JWWA's compliance rubber, can be used for service water and drinking water.

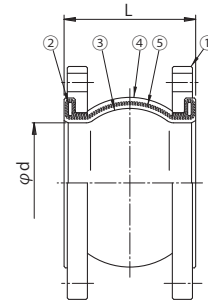
Operation range (pressure, temperature)

Temperature [°C]



- Please use within the operation range of maximum operation pressure and maximum service temperature.

Structure



Number	Name	Material	Number	Name	Material
①	Flange	SS400	④	Outer rubber	EPDM (SK10)
②	Reinforcing ring	SS400	⑤	Reinforcing cord	Aramid fiber
③	Inner rubber	EPDM (SK10)			

Flange compatible dimension	Standard	J I S 1 0 K
	Change OK	× J I S 5 K
	Change OK	× J I S 2 0 K
	Change OK	× A N S I
Material	Standard	S S 4 0 0
	Change OK	× F C D 4 5 0
	Change OK	× S U S 3 0 4
	Change OK	× S U S 3 1 6
	Change OK	× P o l y v i n y l c h l o r i d e

Dimension and allowable displacement (Standard • Product listed by Japan Water Works Association)

Nominal diameter(A)	Main body dimension (mm)		Mass (kg)	Allowable displacement (mm)				Allowable dimension for installation (mm)			
	L	φ d		Lateral displacement	Elongation	Compression	Angular Deflection (°)	Lateral displacement	Elongation	Compression	Angular Deflection (°)
20	100	20	1.4	10	10	10	5	4	3	3	2
25	100	25	2.3	10	10	10	5	4	3	3	2
32	100	32	3.0	10	10	10	5	4	3	3	2
40	100	40	3.1	10	10	10	5	4	3	3	2
50	100	50	3.7	10	10	10	5	4	3	3	2
65	120	65	5.0	10	10	10	5	4	3	3	2
80	120	75	5.2	10	10	10	5	4	3	3	2
100	120	100	6.3	10	10	10	5	4	3	3	2
125	120	125	9.2	10	10	10	5	4	3	3	2
150	150	150	12.2	10	10	10	5	4	3	3	2
200	150	200	14.8	10	10	10	5	4	3	3	2
250	175	250	22.0	10	10	10	5	4	3	3	2
300	175	300	24.3	10	10	10	5	4	3	3	2

- 20A is Product listed by Japan Water Works Association only.
- Product listed by Japan Water Works Association 125A~300A is order product.
- Please use within allowable displacement range.
- The installation allowance is included in the allowable displacement (allowable displacement = installation displacement + operation displacement)
- As shown in chart are data of non-concurrent displacement, please make correction for concurrent displacements.

This brochure may be revised without prior notice. We apologize in advance for any inconvenience this may cause.

Agent

TOZEN Corporation

8-4, Asahi, Yoshikawa
Saitama 342-0008 Japan

WE7-1806

