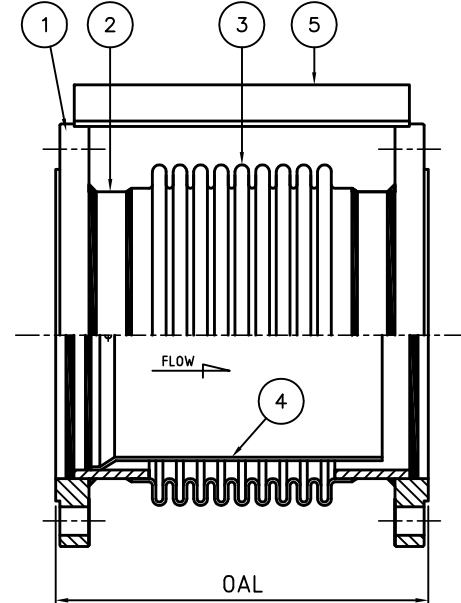
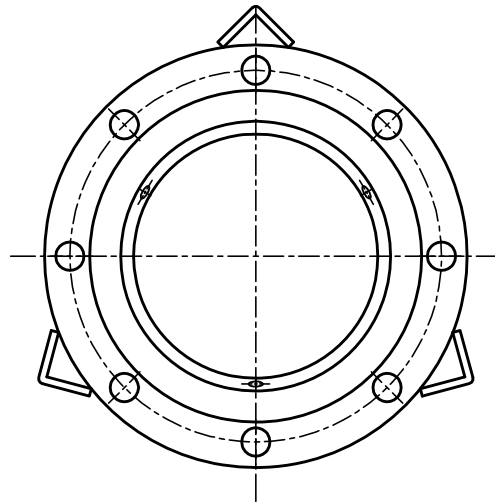


Tolerance on overall length(OAL).				
OAL	Nominal size	up to 100A	125A to 400A	450A to 1000A
up to 500		±3	±4	±6
501 to 1000		±4	±5	±8

Rev.No.	Revision note.	Date	Revised by



Item No.	SIZE mm(inch)	OAL (mm)	Working Pressure (Bar)	Working Temperature (Deg.C)	Axial movement (mm)	Q'ty
1	100A(4")	275	10	250	-30,+5	
2	125A(5")	275	10	250	-30,+5	
3	150A(6")	300	10	250	-30,+5	
4	200A(8")	300	10	250	-30,+5	
5	250A(10")	350	10	250	-30,+5	
6	300A(12")	350	10	250	-30,+5	

CUSTOMER NAME	
PROJECT NAME	

Item	Part Name	Material	Q'ty	Remarks
5	Shipping bar	SS400	3 OR 2	Removed after installation
4	Inner Sleeve	SUS304	1	Drain holes,3-φ5 mm
3	Stainless Steel Bellows	SUS304	1	
2	Short pipe	CS	2	
1	Fix flange	SS400	2	

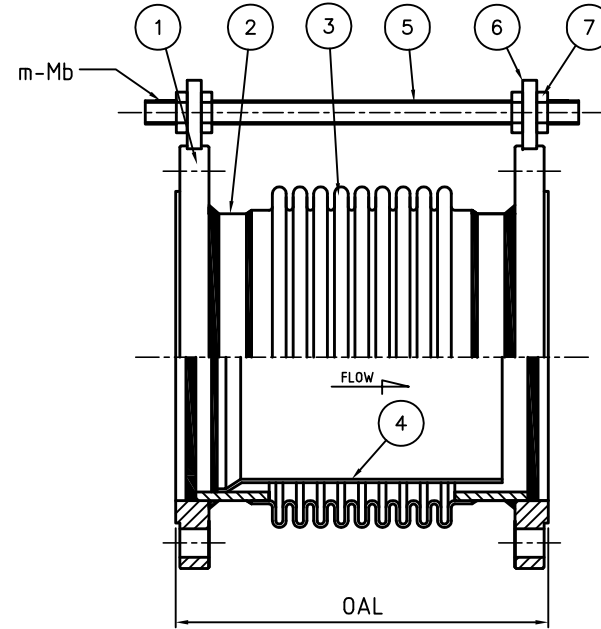
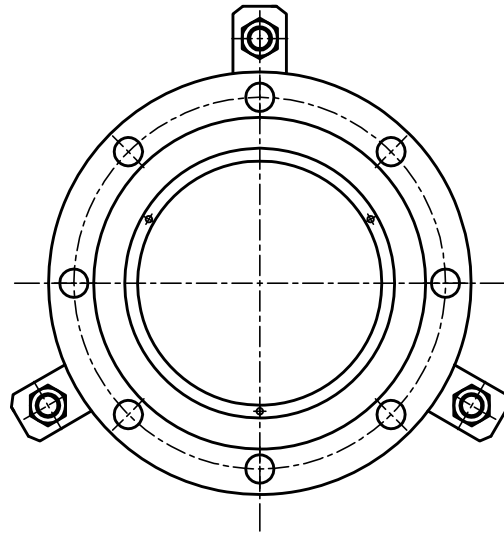
TOZEN	Wellgrow Industrial Estate 126 Moo 9 Bang Wao,Bangpagong, Chachoengsao 24180	PROPRIETARY DATA
	Phone: 038-522-255 Fax: 038-522-254	THIS DOCUMENT CONTAINS TOZEN INDUSTRIAL CO.,LTD. CONFIDENTIAL AND PROPRIETARY INFORMATION AND CANNOT BE USED,DUPICATED OR DISCLOSED IN WHOLE OR IN PART EXCEPT WITH EXPRESS WRITTEN PERMISSION OF TOZEN INDUSTRIAL CO.,LTD.

Note : - Holes on flange may noy shown the number in fact.
- Any information provided in drawing is subject to change without notice for error rectification or design modification.

NAME	DATE	TITLE	EXPANSION JOINT, SJT-1100	Method	
DRAWN		DWG NO.	PREXX-XXX	Size	A4
CHK'D		MATERIAL	-	REVISION	00
APPV'D		SCALE	N/A	UNIT	mm

Tolerance on overall length(OAL).				
OAL	Nominal size	up to 100A	125A to 400A	450A to 1000A
up to 500		±3	±4	±6
501 to 1000		±4	±5	±8

Rev.No.	Revision note.	Date	Revised by



Item No.	SIZE mm(inch)	OAL (mm)	Working Pressure (Bar)	Working Temperature (Deg.C)	Axial movement (mm)	m-Mb	Q'ty
1	100A(4")	275	10	250	-30,+5	2-M12	
2	125A(5")	275	10	250	-30,+5	2-M12	
3	150A(6")	300	10	250	-30,+5	2-M12	
4	200A(8")	300	10	250	-30,+5	3-M16	
5	250A(10")	350	10	250	-30,+5	3-M16	
6	300A(12")	350	10	250	-30,+5	3-M16	

CUSTOMER NAME	
PROJECT NAME	

Item	Part Name	Material	Q'ty	Remarks
7	Nut	SS400	mx4	
6	Shipping Holder	SS400	mx2	
5	Shipping Rod	SS400	m	Removed after installation
4	Inner Sleeve	SUS304	1	Drain holes,3-φ5 mm
3	Stainless Steel Bellows	SUS304	1	
2	Short pipe	CS	2	
1	Fix flange	SS400	2	

TOZEN Wellgrow Industrial Estate
 126 Moo 9 Bang Wao, Bangpagong,
 Chachoengsao 24180

Phone: 038-522-255
 Fax: 038-522-254

PROPRIETARY DATA

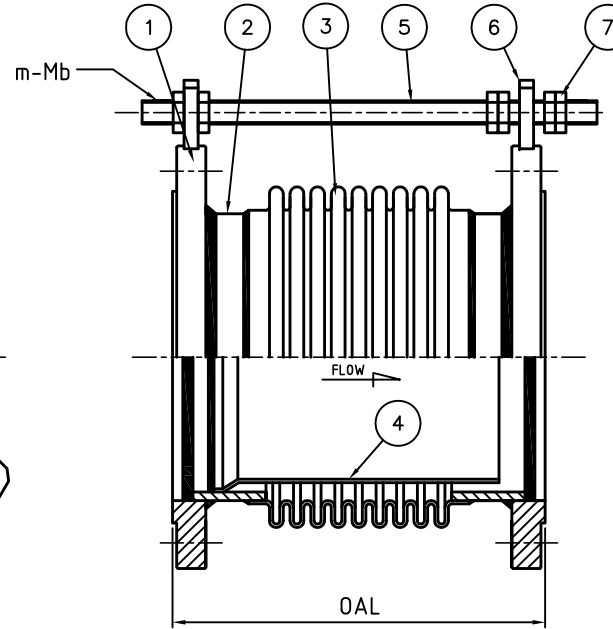
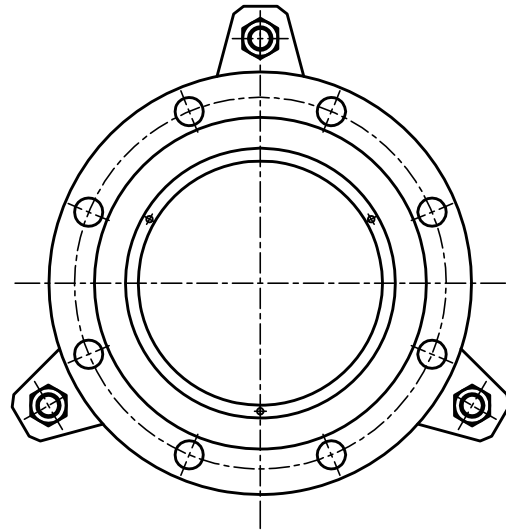
THIS DOCUMENT CONTAINS TOZEN INDUSTRIAL CO.,LTD.
 CONFIDENTIAL AND PROPRIETARY INFORMATION AND CANNOT
 BE USED, DUPLICATED OR DISCLOSED IN WHOLE OR IN PART
 EXCEPT WITH EXPRESS WRITTEN PERMISSION OF
 TOZEN INDUSTRIAL CO.,LTD.

Note : - Holes on flange may not show the number in fact.
 - Any information provided in drawing is subject to change
 without notice for error rectification or design modification.

NAME	DATE	TITLE	EXPANSION JOINT, SJT-1100	Method	
DRAWN		DWG NO.	PREXX-XXX	Size	A4
CHK'D		MATERIAL	-	SCALE	N/A
APPV'D		UNIT	mm	REVISION	00

Tolerance on overall length(OAL).				
OAL	Nominal size	up to 100A	125A to 400A	450A to 1000A
up to 500		±3	±4	±6
501 to 1000		±4	±5	±8

Rev.No.	Revision note.	Date	Revised by
---------	----------------	------	------------

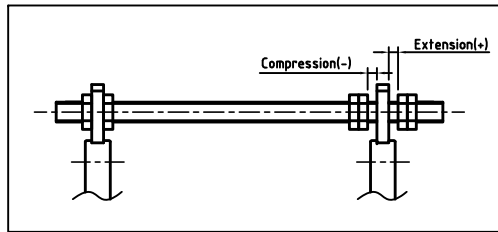


Item No.	SIZE mm(inch)	OAL (mm)	Working Pressure (Bar)	Working Temperature (Deg.C)	Axial movement (mm)	m-Mb	Q'ty
1	100A(4")	275	10	250	-30,+5	2-M16	
2	125A(5")	275	10	250	-30,+5	2-M16	
3	150A(6")	300	10	250	-30,+5	2-M16	
4	200A(8")	300	10	250	-30,+5	2-M20	
5	250A(10")	350	10	250	-30,+5	3-M20	
6	300A(12")	350	10	250	-30,+5	3-M20	

CUSTOMER NAME	
PROJECT NAME	

Item	Part Name	Material	Q'ty	Remarks
7	Nut	SS400	mx6	
6	Thick Holder	SS400	mx2	
5	Limit Rod	SS400	m	
4	Inner Sleeve	SUS304	1	Drain holes,3-φ5 mm
3	Stainless Steel Bellows	SUS304	1	
2	Short pipe	CS	2	
1	Fix Flange	SS400	2	

Setting nuts of Limit rods



Note : - Holes on flange may not shown the number in fact.
 - Any information provided in drawing is subject to change without notice for error rectification or design modification.

		Wellgrow Industrial Estate 126 Moo 9 Bang Wao, Bangpagong, Chachoengsao 24180 Phone: 038-522-255 Fax: 038-522-254		PROPRIETARY DATA THIS DOCUMENT CONTAINS TOZEN INDUSTRIAL CO., LTD. CONFIDENTIAL AND PROPRIETARY INFORMATION AND CANNOT BE USED, DUPLICATED OR DISCLOSED IN WHOLE OR IN PART EXCEPT WITH EXPRESS WRITTEN PERMISSION OF TOZEN INDUSTRIAL CO., LTD.	
		DRAWN CHK'D APPV'D	NAME DATE	TITLE EXPANSION JOINT, SJT-1100-LR	DWG NO. PREXX-XXX